

# SHIMLA FLYING FESTIVAL & HOSPITALITY EXPO 2024



## SUBSIDY/REEMBURSEMENT - ELIGIBILITY AND PROCESS



### SUBSIDY/REEMBURSEMENT

Participation fee is Rs. 56,640/- (including GST) for 6 sq. meters of space. Subsidy/reimbursement is 80% for General MSE's and 100% for Women/SC/ST/Ph/Ner/Aspirational District MSE's



### HOW TO APPLY

The MSEs units should apply online for stalls. The scheme is on First come First Serve basis for 60 MSEs. The units which apply before 06.10.2024 will only be eligible for subsidy/reimbursement.



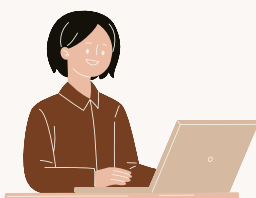
### CATEGORY OF EXHIBITOR PROFILE

Kitchen Equipment, Bar Equipment, Perfumery manufacturers, Handicraft & Handlooms Products, Home Decor Furnishers, Carpet manufacturers, Gift & Toys, Naturopathy, Wellness, Agri-horticulture, Food, Dairy, organic Products, Travel Consultants, Products related to Air Sports.



### ELIGIBILITY CRITERIA

The unit should be micro, small enterprises from the above mentioned categories. Must have udyam Adhaar Registration before booking the stall.



### LAST DATE OF FILING FOR SUBSIDY

One can claim the subsidy by filing an online application at the link mentioned below before 30 days of closure of the event.

[https://my.msme.gov.in/MyMsme/Reg/COM\\_MatuDomAppForm.aspx](https://my.msme.gov.in/MyMsme/Reg/COM_MatuDomAppForm.aspx)